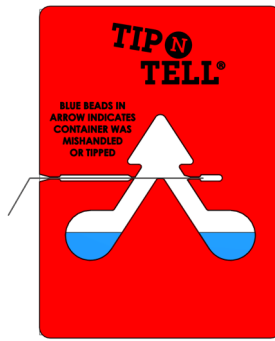




Instructions for Use



Tip (N) Tell® Tip Indicator

This carton contains equal numbers of Tip (N) Tell® tip indicators and shipping labels which together comprise a system to monitor your shipped product.

Attach the larger warning label to either the top or side of the package to be shipped.

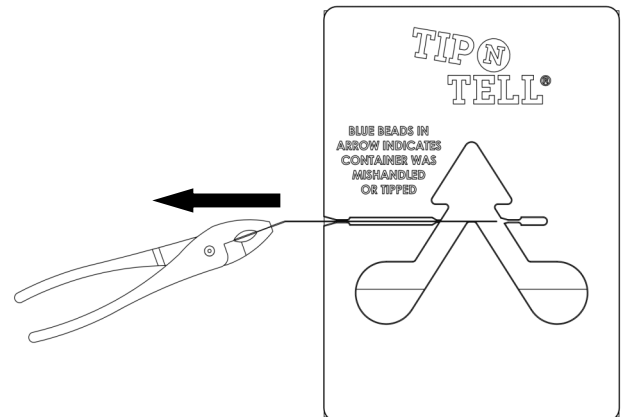
Use the bill of lading label to alert the carrier or consignee that your shipment contains a warning device.



Activating the Tip (N) Tell® Tip Indicator

Be careful not to tip the indicators during the activation and mounting process!

1. Grasp the Tip (N) Tell® with the arrow pointing up.
2. Using a pair of pliers, completely remove the metal pin from the indicator.



Mounting the Tip (N) Tell® Tip Indicator

The Tip (N) Tell® has a pressure sensitive adhesive backing to firmly attach the device to your package. Remove the release liner from the back side and firmly press the indicator onto your package with the arrow pointing up.

